

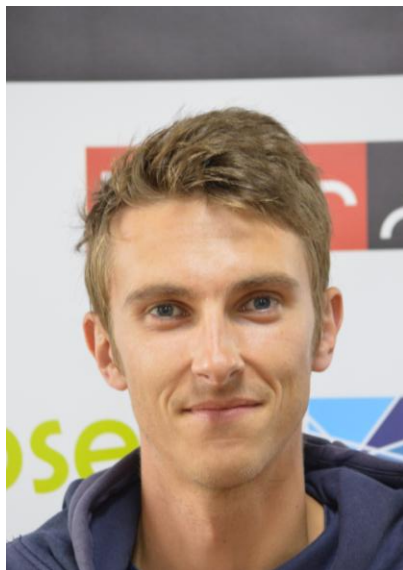
39th FAI
WORLD GLIDING
CHAMPIONSHIPS
TÁBOR I 2025



DAILY BRIEFING

COMPETITION DAY 5 – 13/06/2025

STANDARD CLASS DAILY WINNERS



Second Place:
Julien Duboc [FRA]

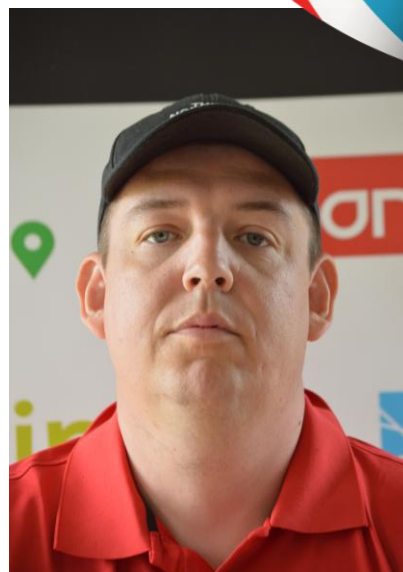


First Place:
Louis Boudier [FRA]



Third Place:
Barbora Moravcová [CZE]

HAPPY BIRTHDAY!!!



Michael Mix [DEN]



REMARKS TO YESTERDAY

- LONG LANDINGS ARE BETTER ...
- BUT IMPROVEMENTS ARE STILL NEEDED
- LEAVE RWY FASTER AFTER LANDING
- DRIVE SLOWLY ON THE AIRFIELD
- DO NOT CHARGE CARS IN THE CAMP!!!

SAFETY REMARKS

— “Overall, the gaggle flying ... was quite aggressive and dangerous. If we continue like this for another three days in blue thermals, there is a high likelihood of a mid-air collision.”

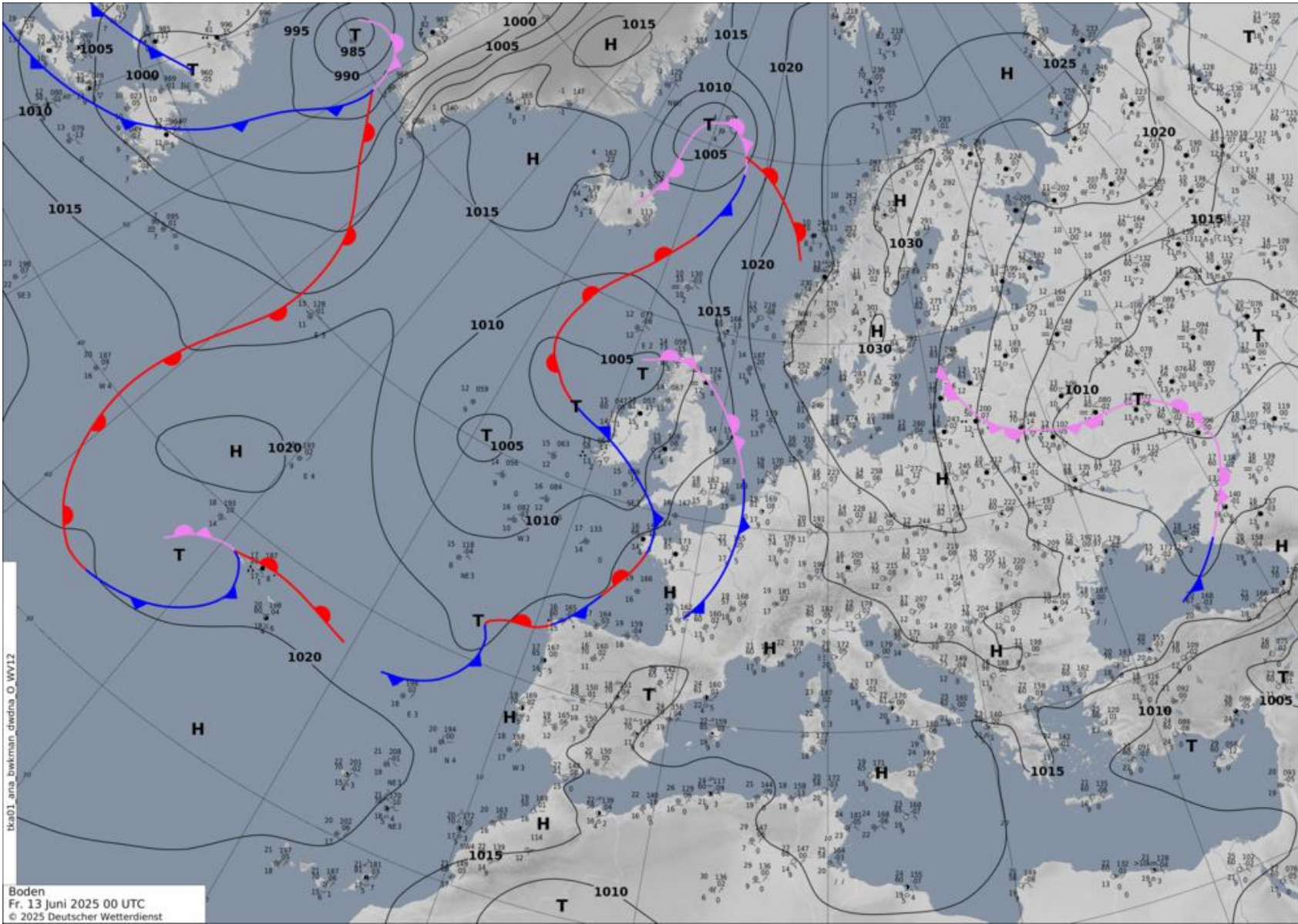
SAFETY REMARKS

- “If you are following close, ALWAYS be prepared for the glider in front to make an unexpected turn (e.g. leave the gaggle at a wrong time)”

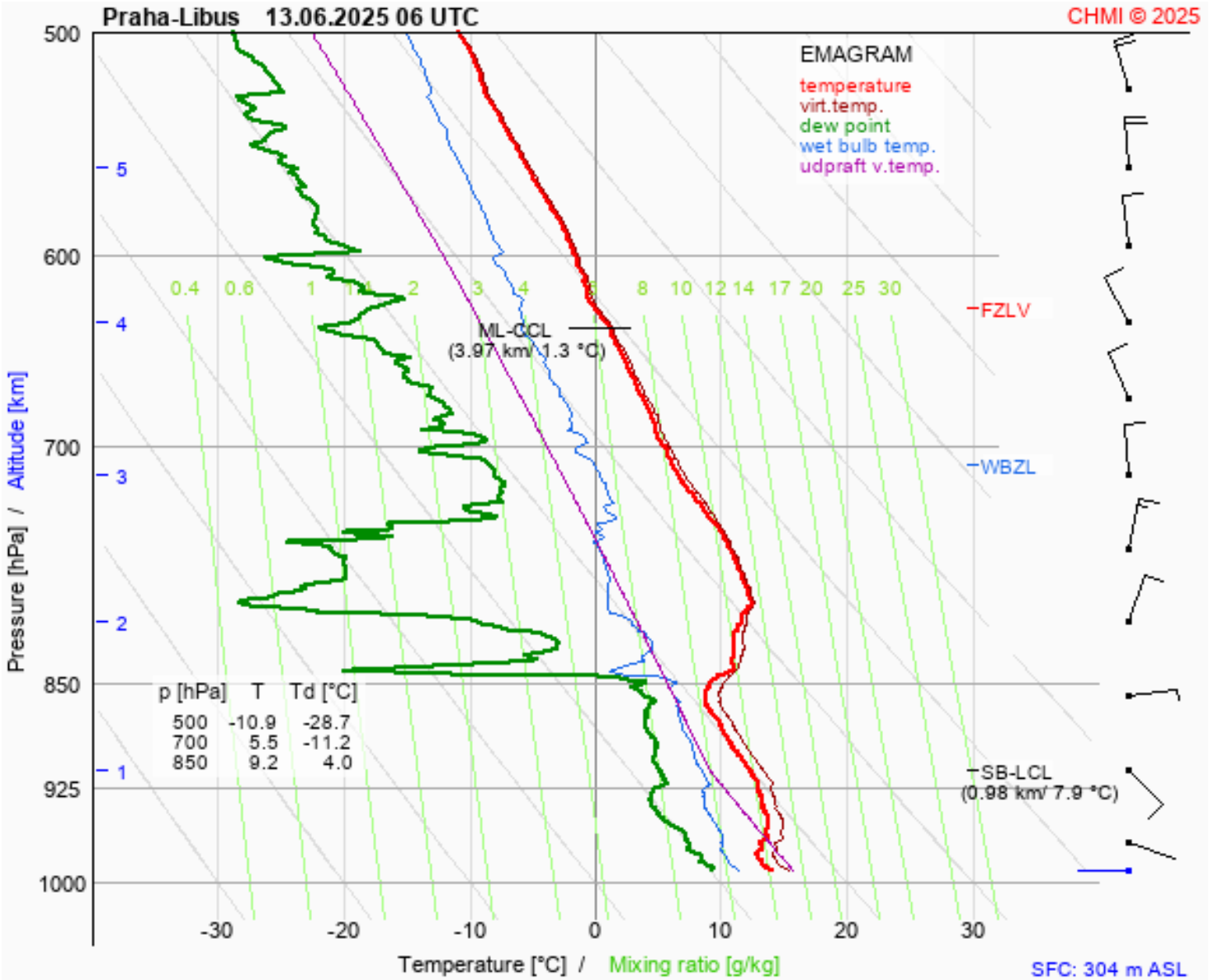
WEATHER



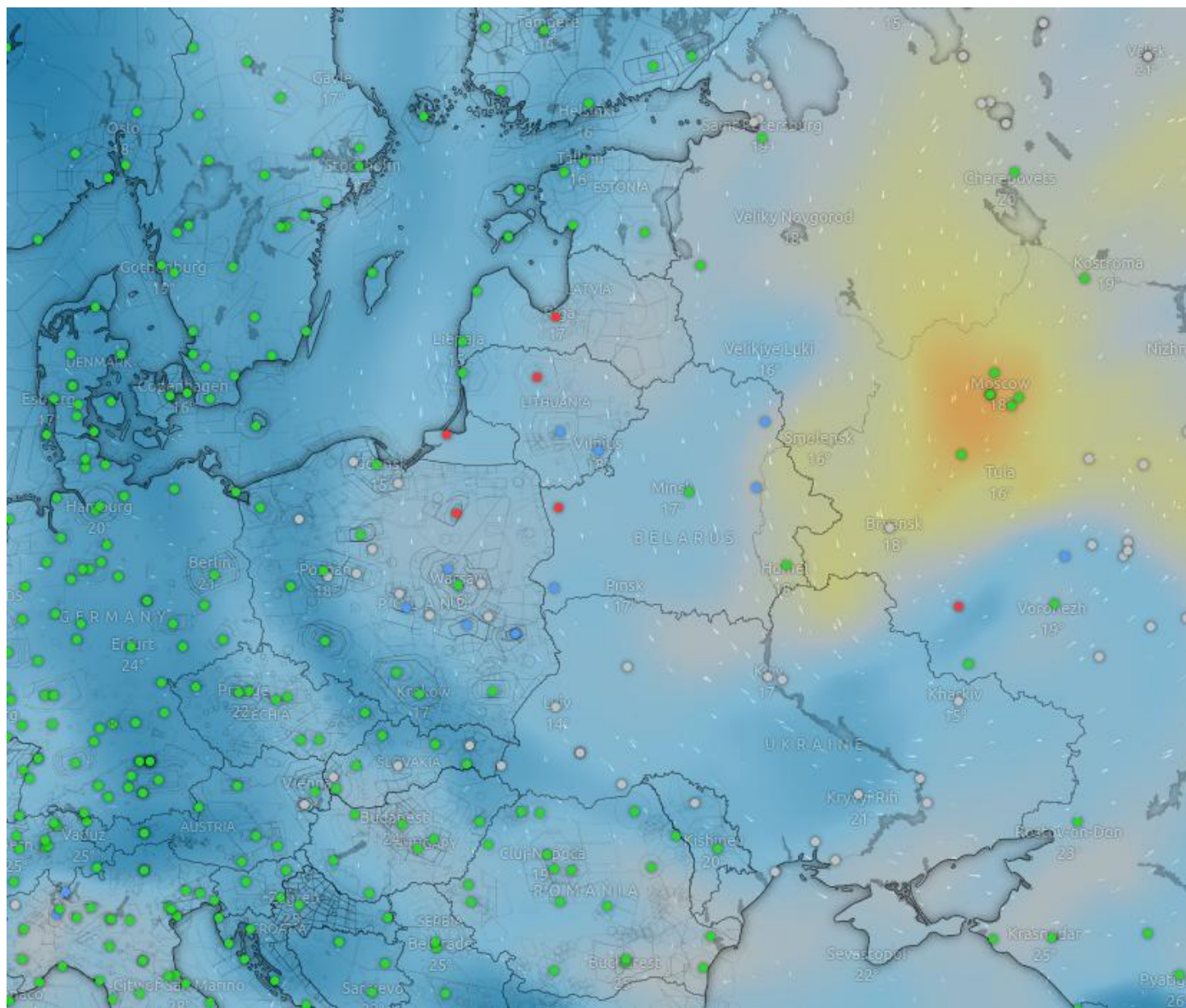
WEATHER



WEATHER



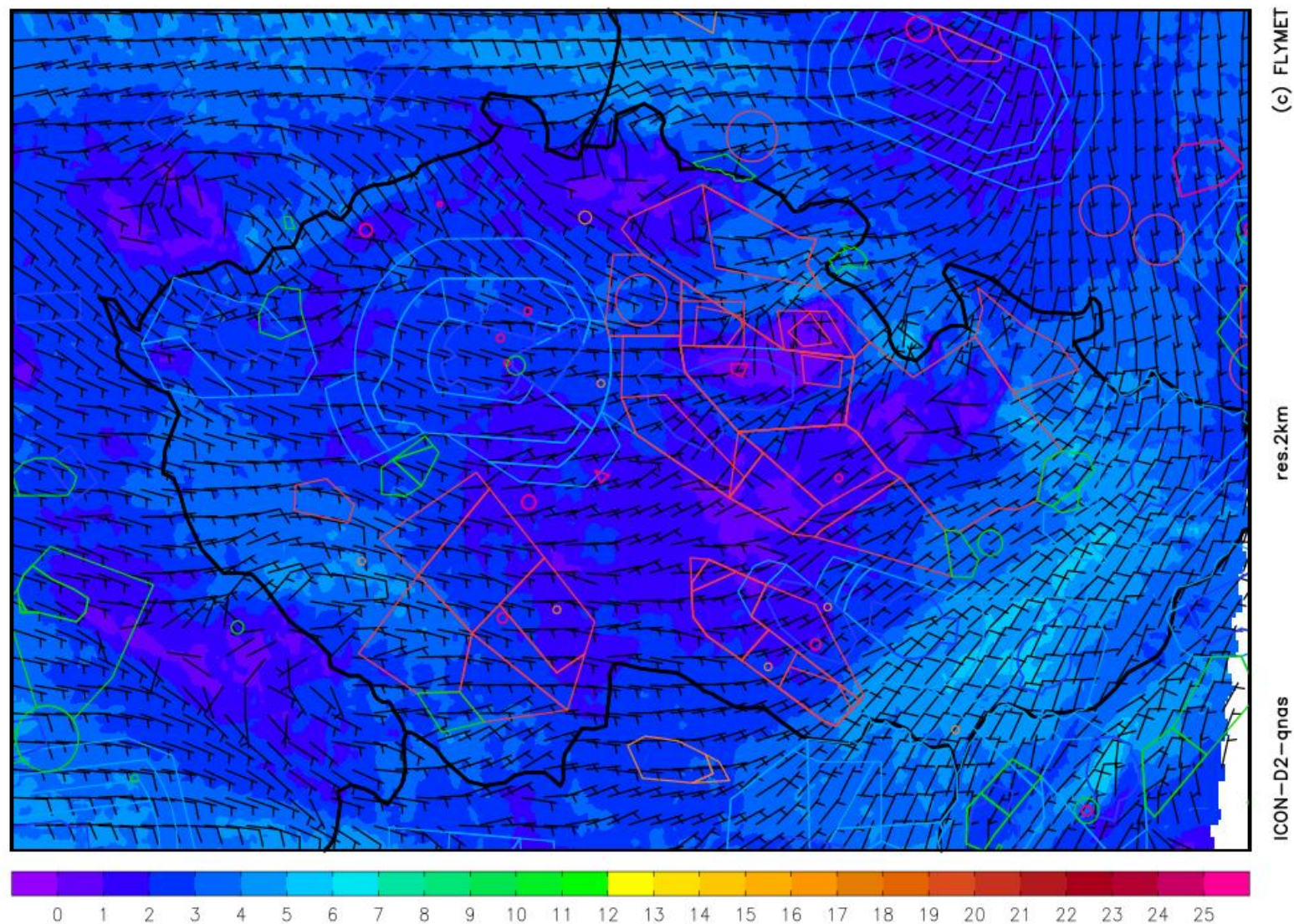
WEATHER



WEATHER

wind at 10m [m/s]

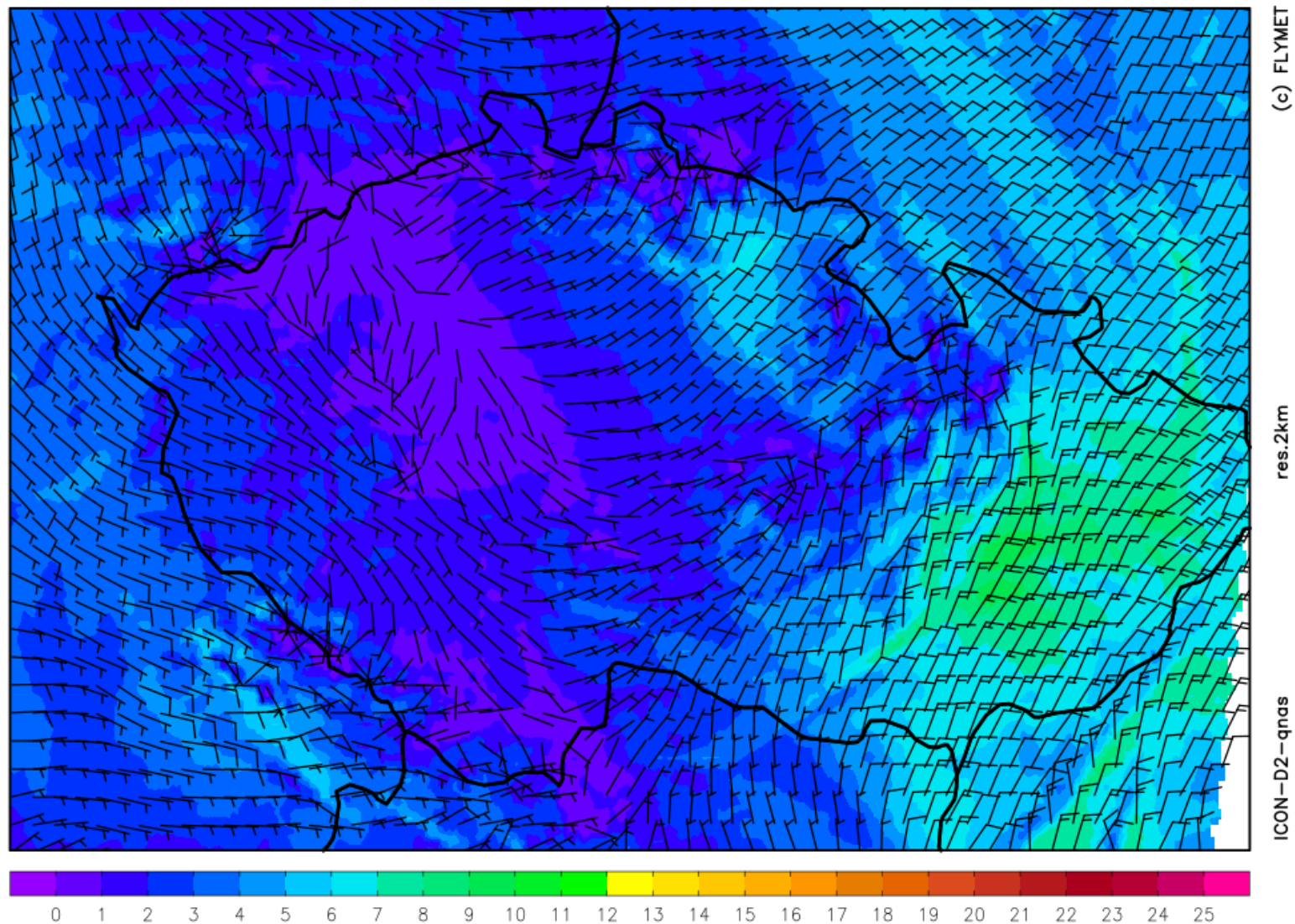
friday 13.06. 2025 10:00 utc



WEATHER

wind 1500 m [m/s]

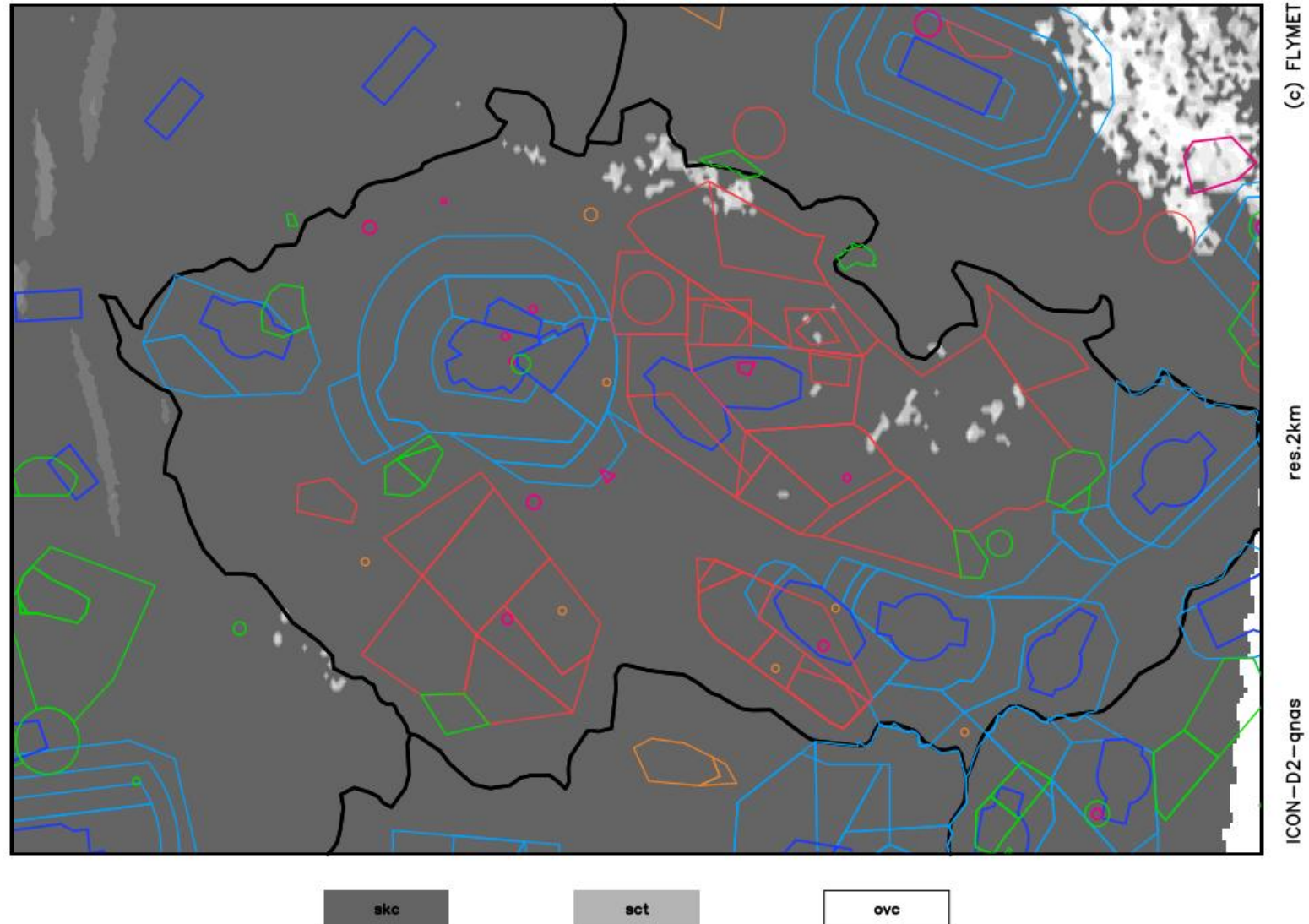
friday 13.06. 2025 12:00 utc



WEATHER

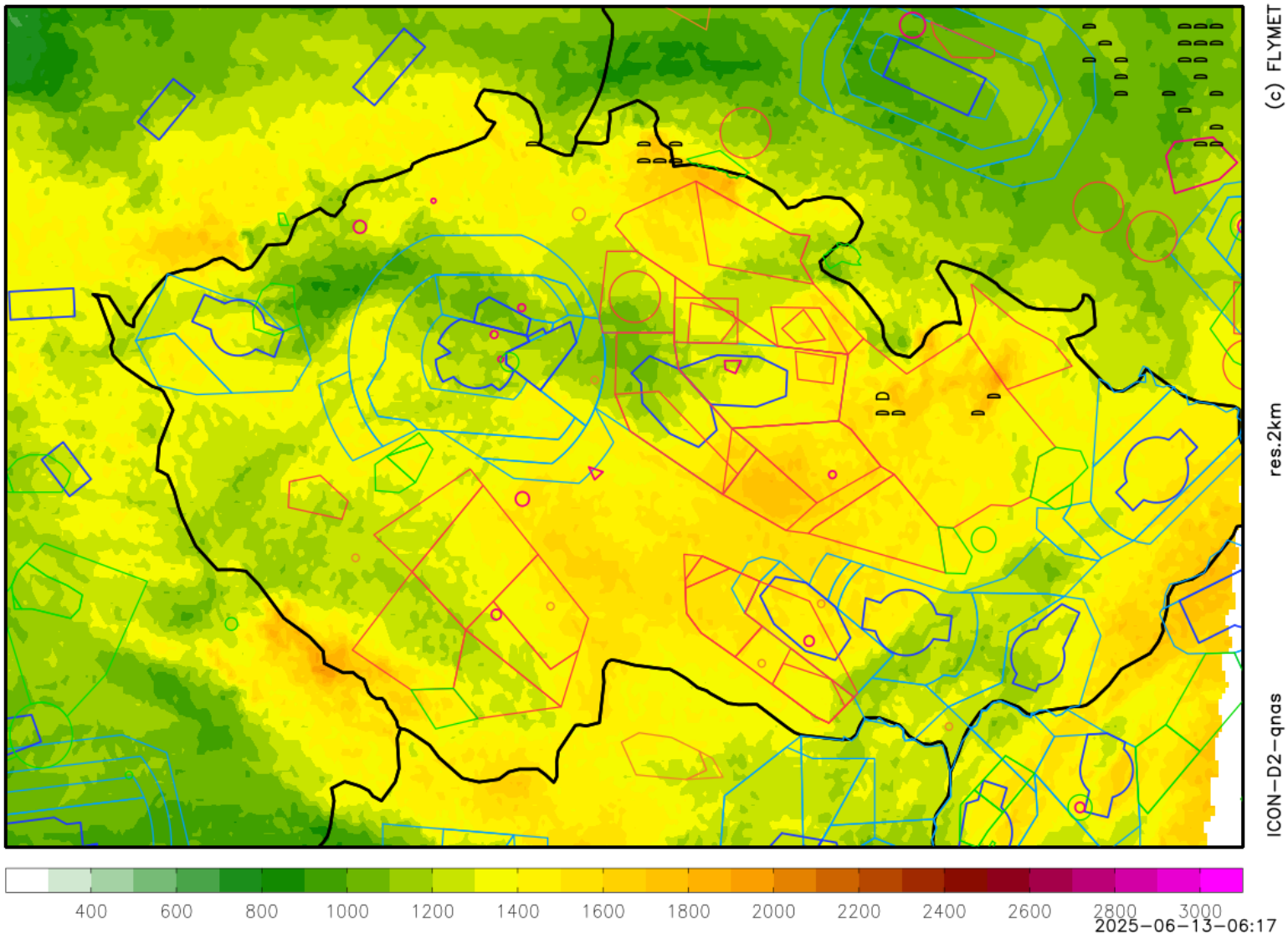
clouds

friday 13.06. 2025 12:00 utc



WEATHER

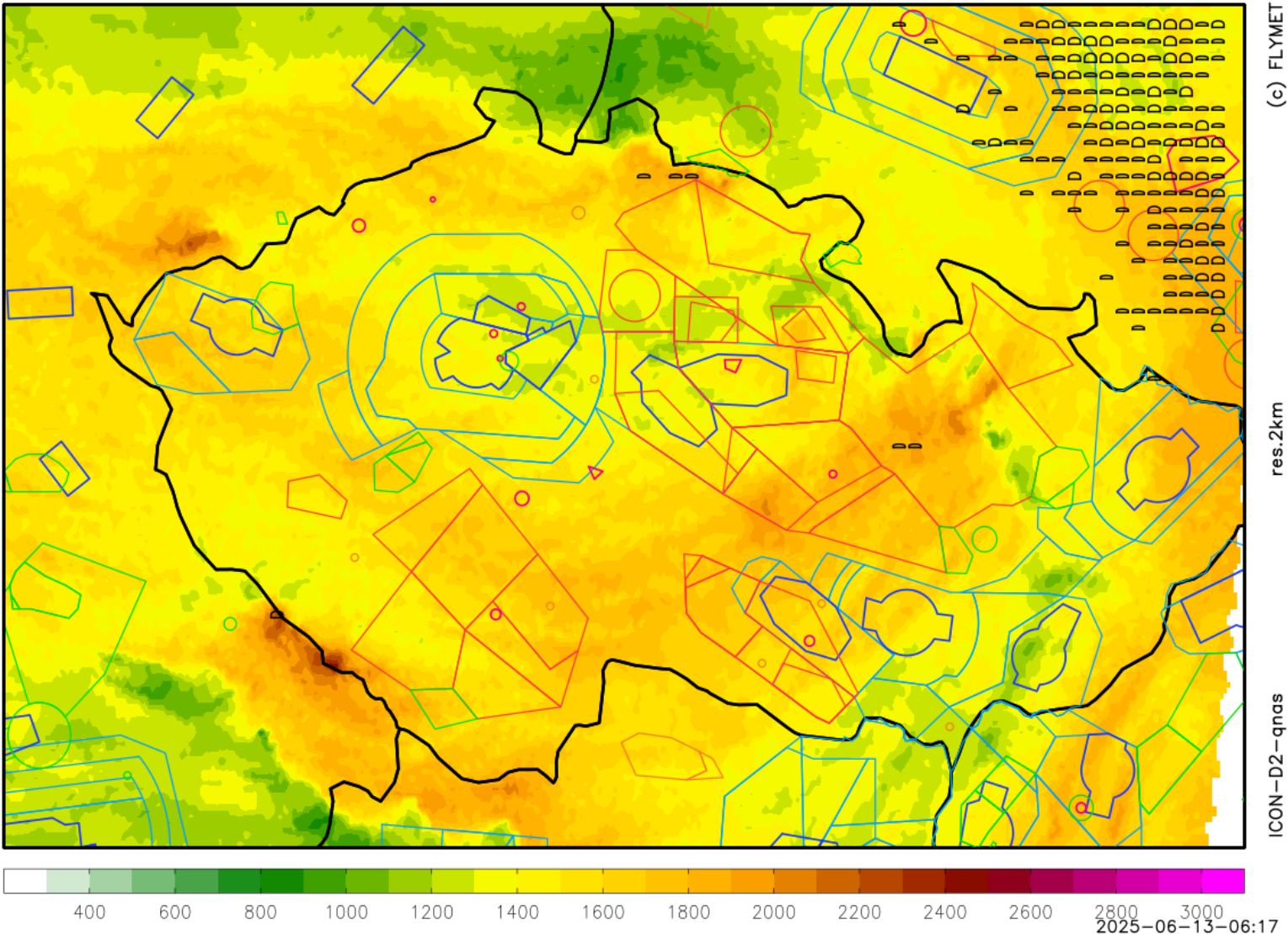
thermals blue + cumulus friday 13.06.2025 10:00utc



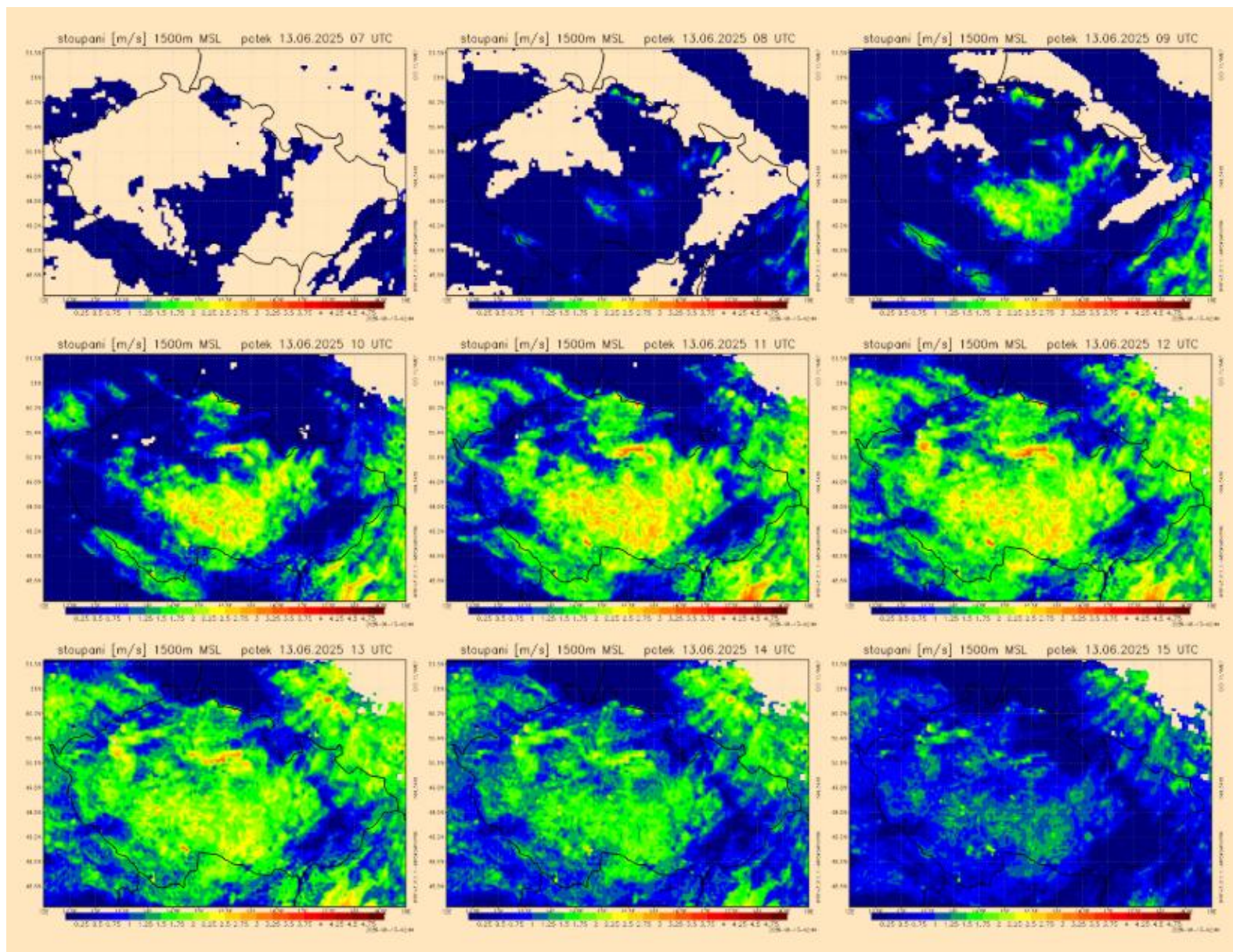
WEATHER

thermals blue + cumulus

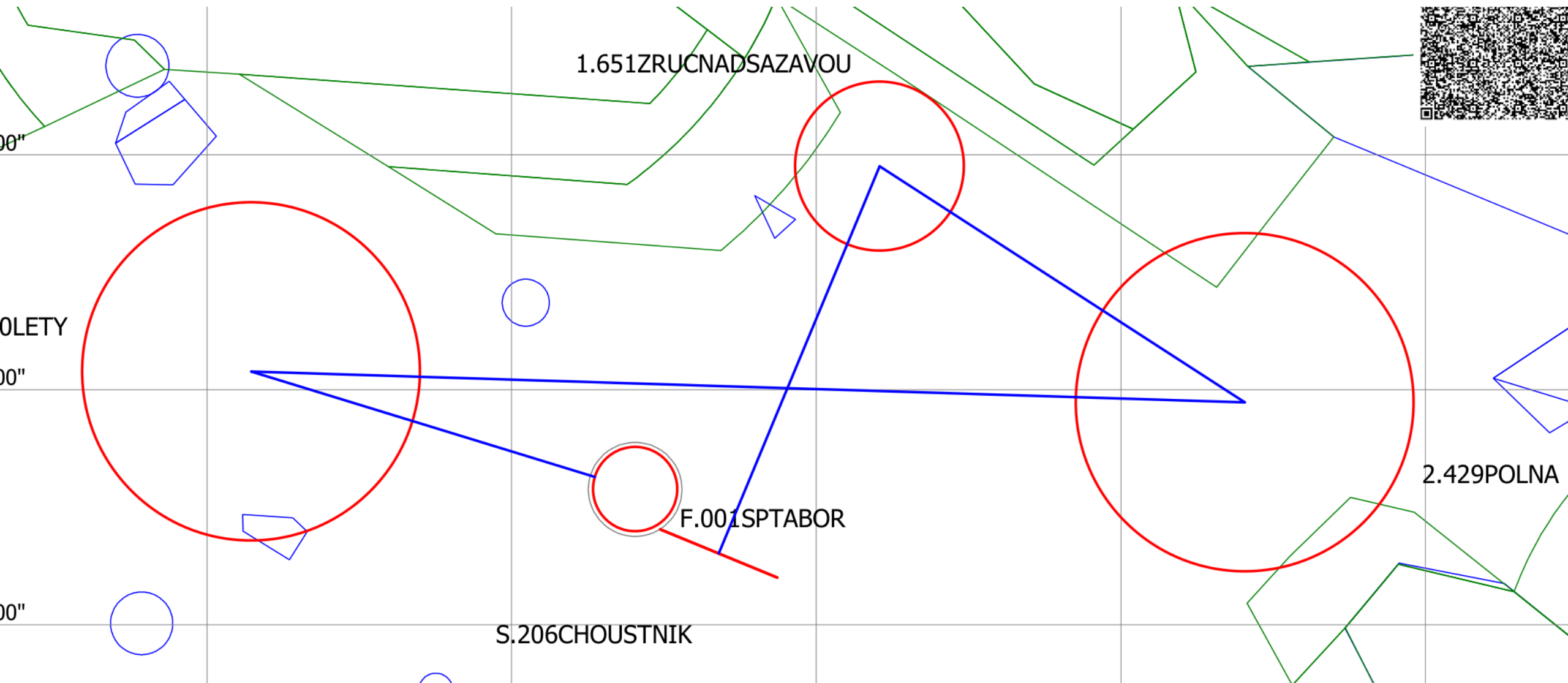
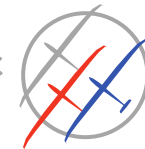
friday 13.06.2025 14:00utc



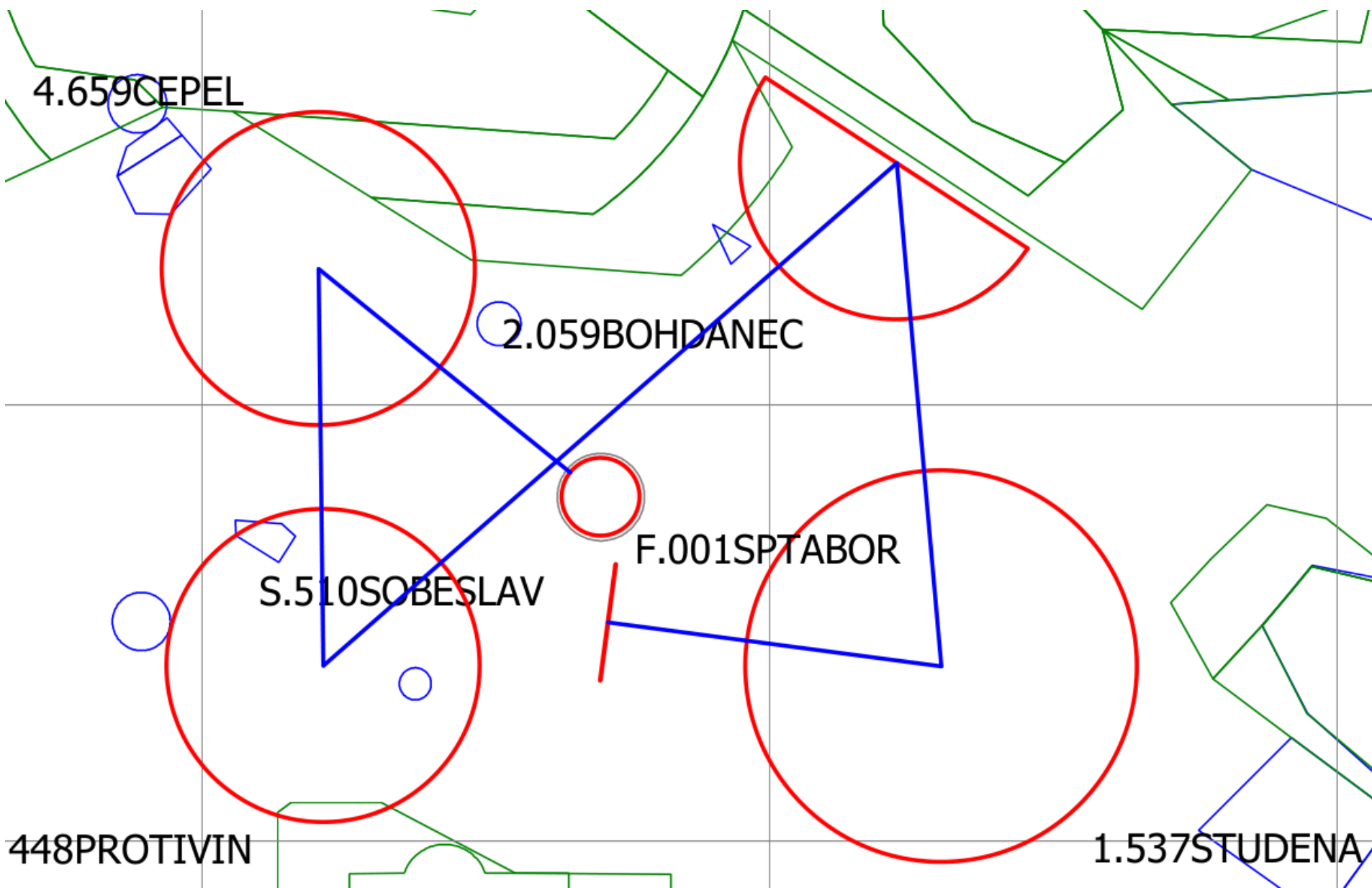
WEATHER



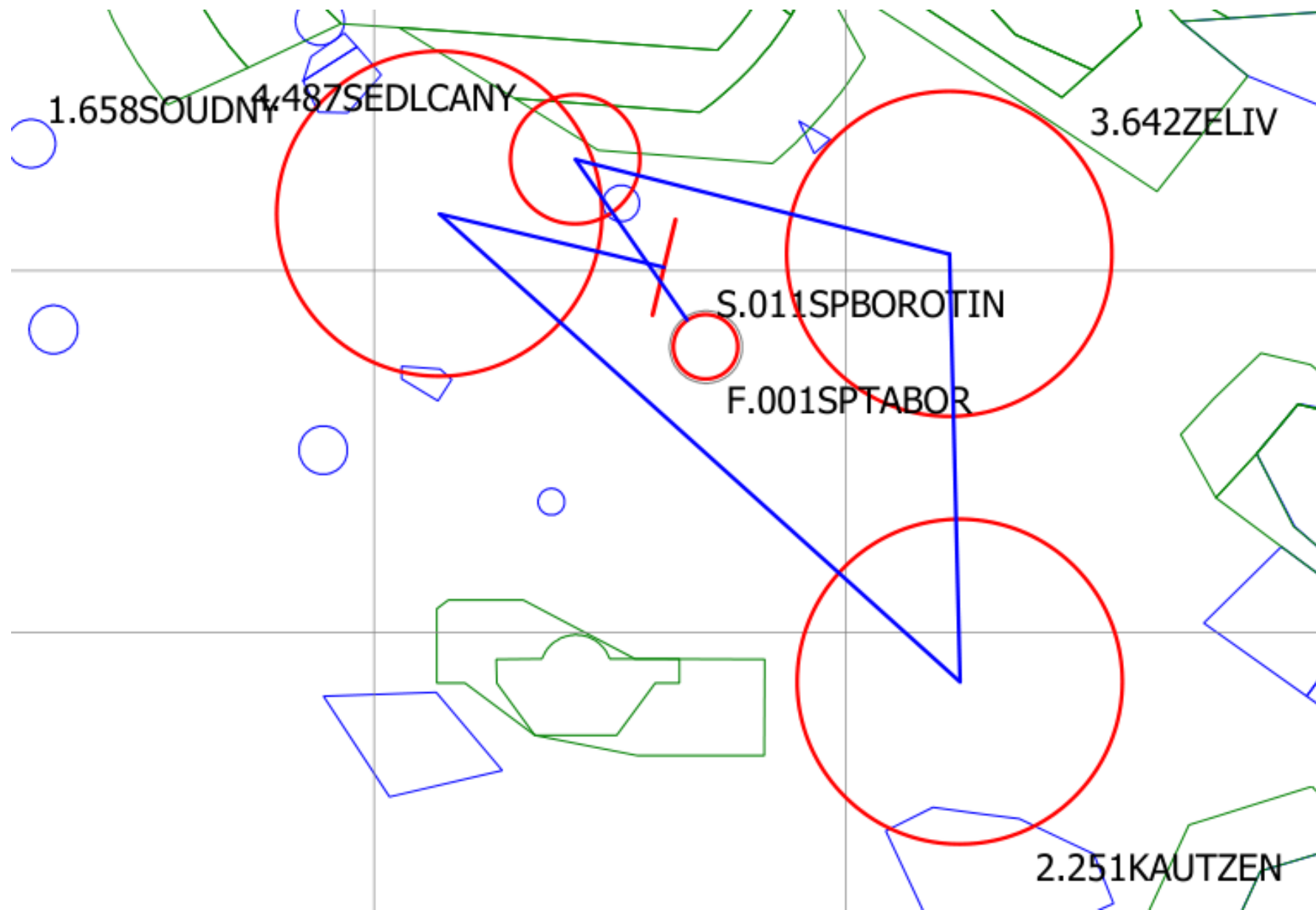
TASK FOR CLUB CLASS



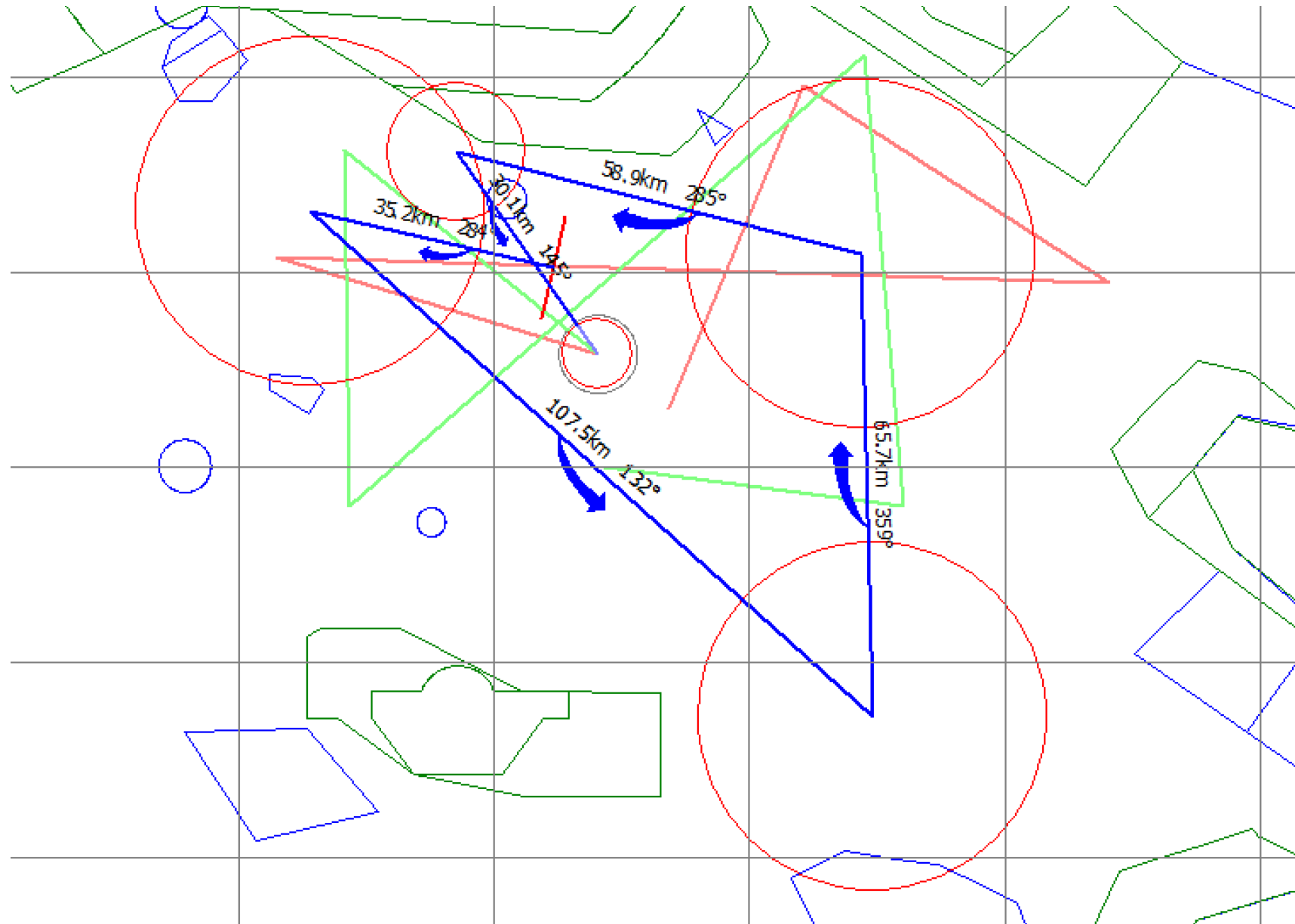
TASK FOR STANDARD CLASS



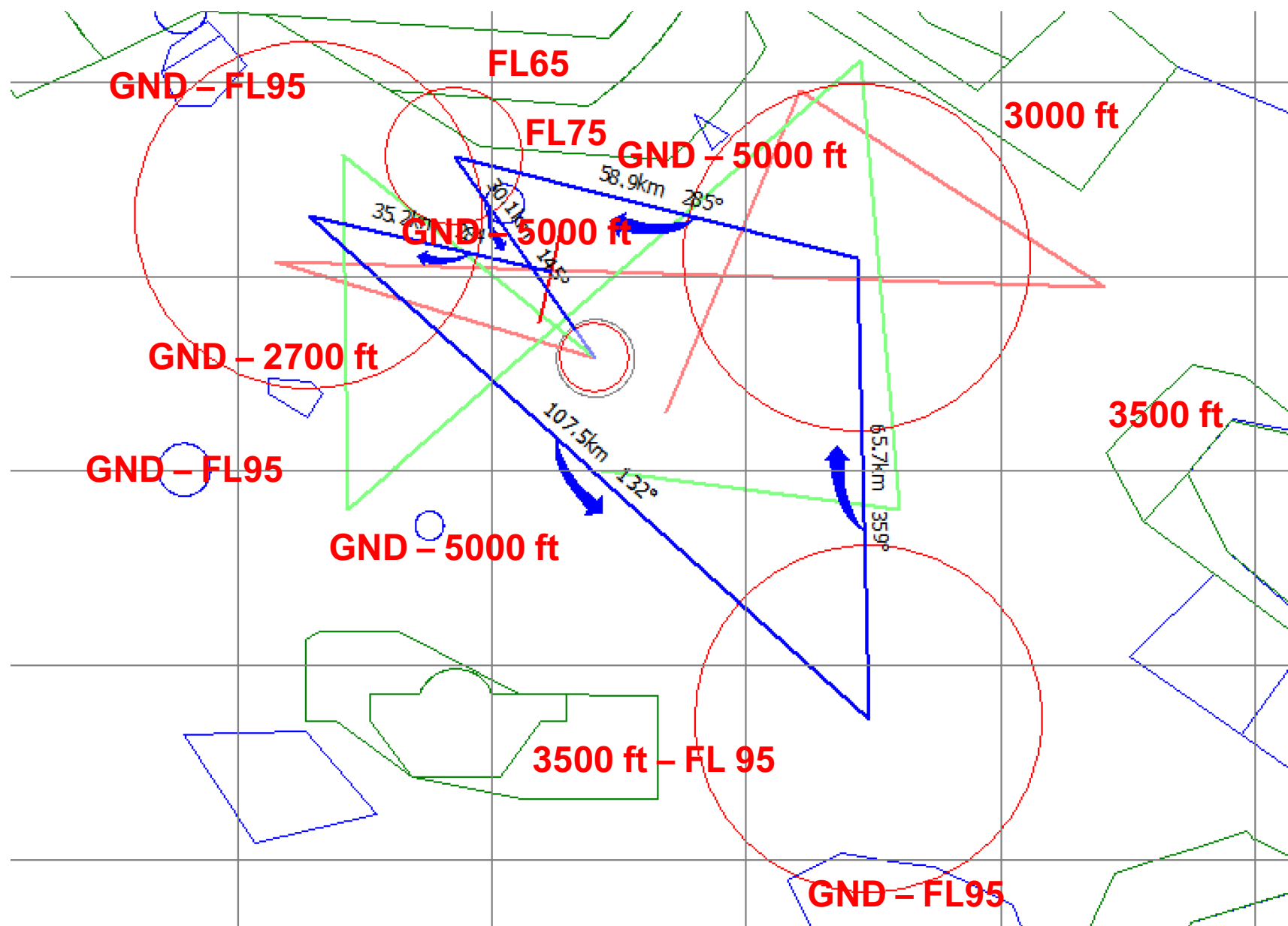
TASK FOR 15M CLASS



TASK OVERLAY

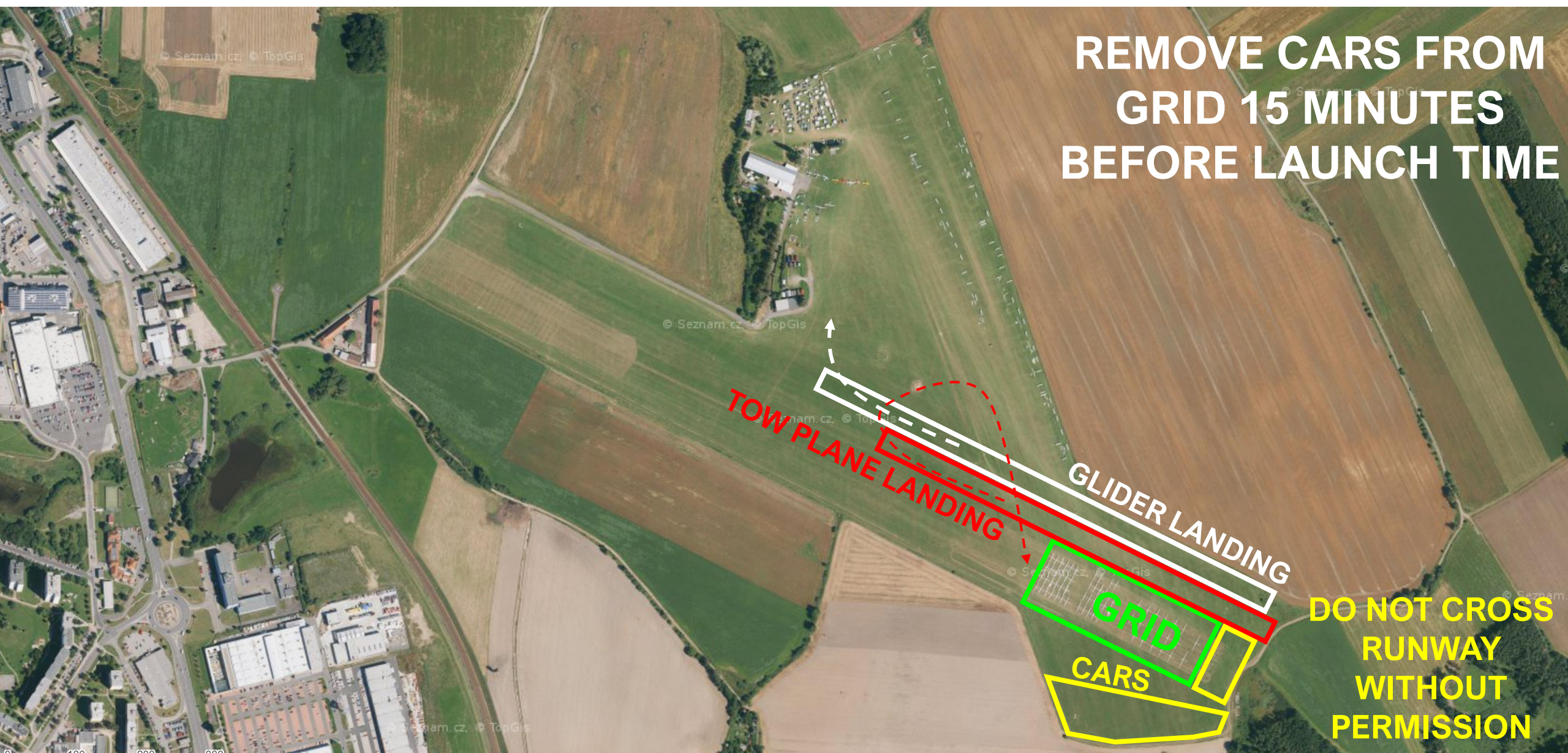


AIRSPACE



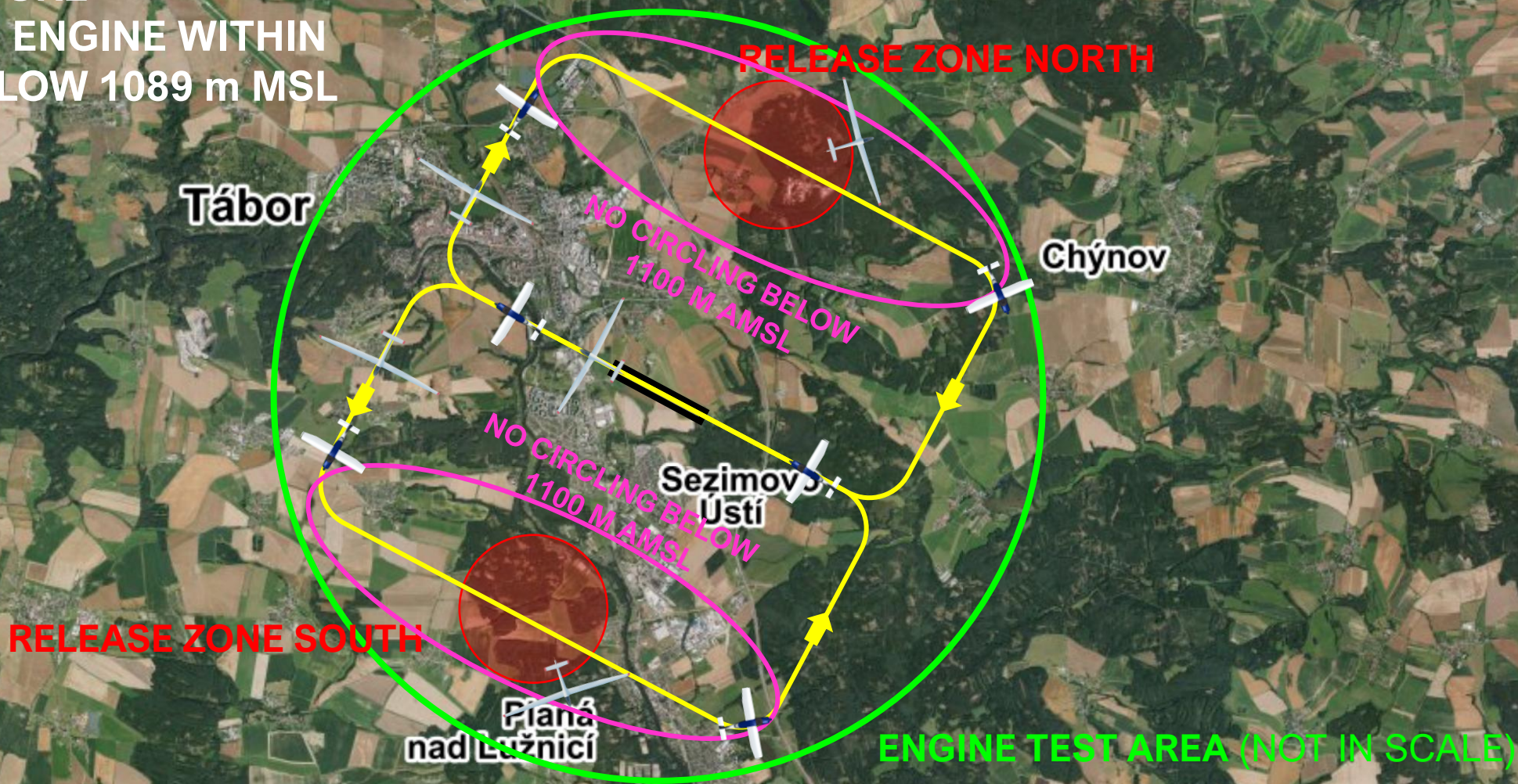
TAKE-OFF RWY 29

REMOVE CARS FROM
GRID 15 MINUTES
BEFORE LAUNCH TIME



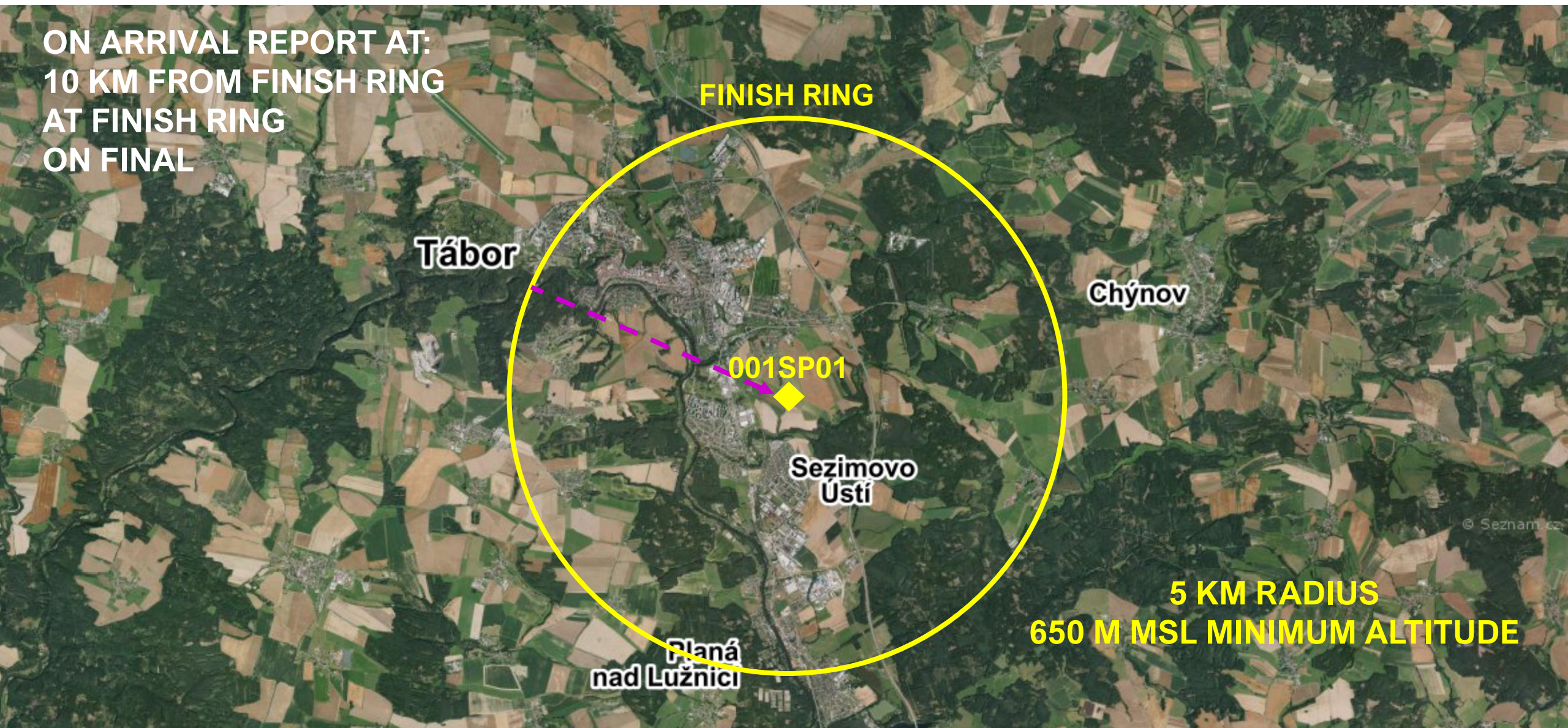
AEROTOWS RWY 29

FOR SELF-LAUNCH FOLLOW
SAME PROCEDURE
TURN OFF THE ENGINE WITHIN
TEST AREA BELOW 1089 m MSL



FINISH RWY 11

ON ARRIVAL REPORT AT:
10 KM FROM FINISH RING
AT FINISH RING
ON FINAL



FINISH RING

Tábor

Chýnov

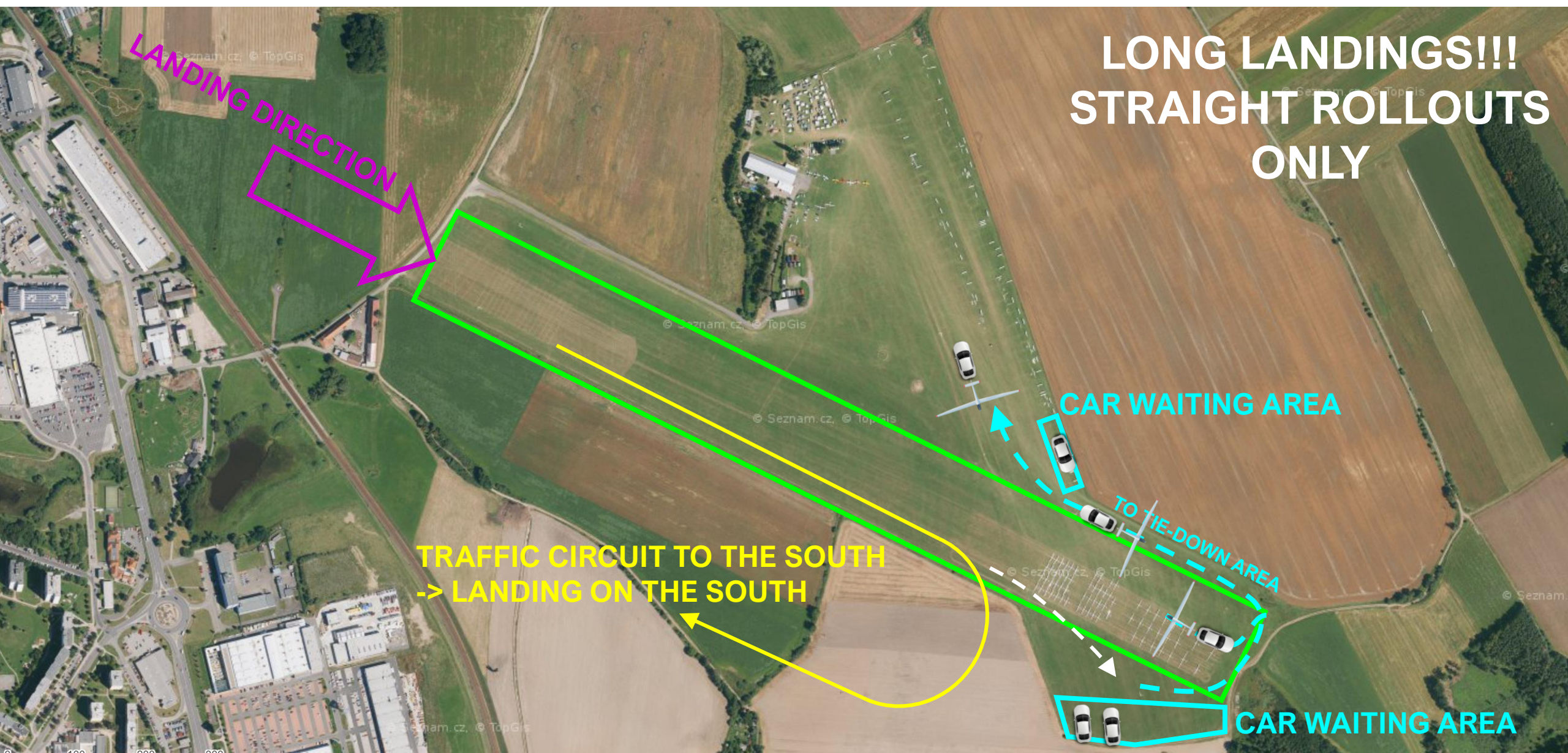
001SP01

Sezimovo
Ústí

Planá
nad Lužnicí

5 KM RADIUS
650 M MSL MINIMUM ALTITUDE

LANDING RWY 11



ENERGY CONTROL

- MAXIMUM START ALTITUDE

Not in use today

- MAXIMUM START GROUND SPEED

Not in use today

PRE-START ALTITUDE LIMIT

— PRE-START ALTITUDE LIMIT

Not in use today

PEV START PROCEDURE

— PEV WAIT TIME

10 MINUTES

— PEV START WINDOW

5 MINUTES

— MAXIMUM NUMBER OF STARTS: 3

START LINE OPENING

- START LINE WILL OPEN 30 MINUTES AFTER
LAST LAUNCH IN CLASS

IGC FILE DELIVERY

- SEND ALL FILES TO IGC@POHODA.COM
- **45 MINUTES FOR FILE DELIVERY**
- INCLUDE CN IN EMAIL SUBJECT
- ENSURE CORRECT FILE HEADER
- 1 SECOND FIX RATE

SAFETY

- LOOK OUT, LOOK OUT, LOOK OUT
- STAY HYDRATED
- FLY SAFE

INFORMATION FOR TODAY

- RUNWAY FOR TAKE-OFF: **29**
- RWY FOR LANDING: **11**
- FIRST LAUNCH: **11:30**
- TASK A IS VALID

Jihočeský kraj



eclipse.



Air Navigation Services
of the Czech Republic



Cred0.

SKUPINA
GW JIHOTRANS



NOBIS GROUP
WWW.AGROPANEL.CZ

ma dona
Zpracování PUR a PE pěn